

PHOTOMETRIC TEST REPORT

DECOR PRO ROUND FLUSH
FIXED - TEXTURED WHITE -
4002995

astro

DECOR PRO ROUND FLUSH FIXED -

astro

LIGHT EFFICIENCY:

76 Lumen/Watt

LIGHT QUALITY:

CRI: 94.7

COLOR TEMPERATURE:

2727 K

OUTPUT: 885 lm

PEAK: 3261 cd

POWER: 11.7 W

PF: 0.95



Tracking number: [n/a](#)

Product name:

Decor Pro Round Flush Fixed - Textured White - 4002995

Item number:

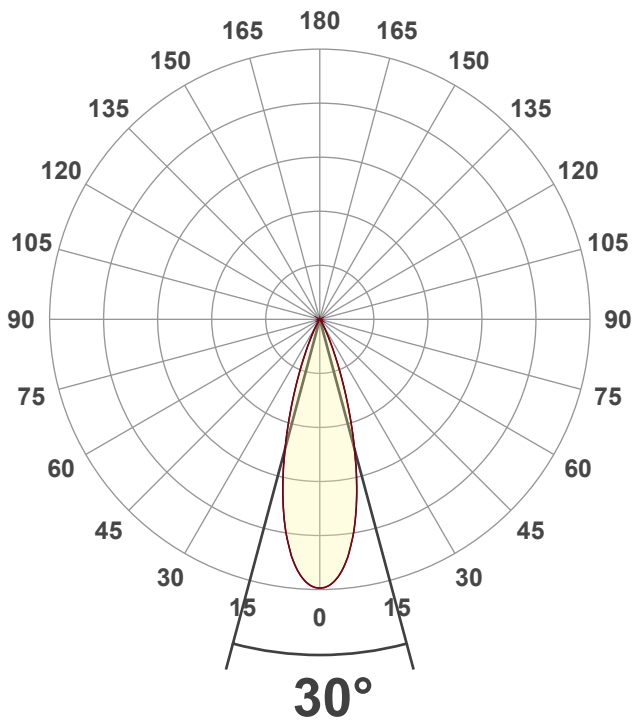
DRFF-TW-HQ27G1-30G1-X-D1

Date and time:

31/01/2025 15:34:35

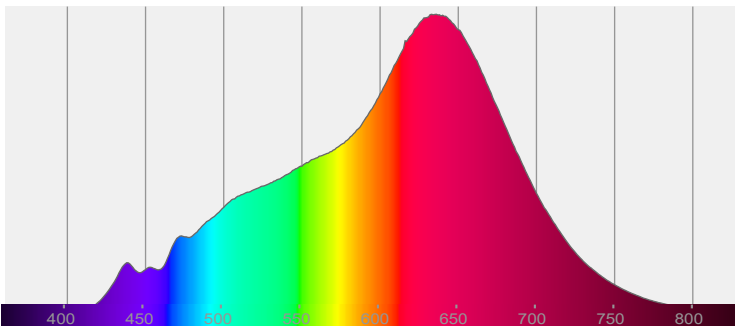
Description:

IP20 LED Downlight

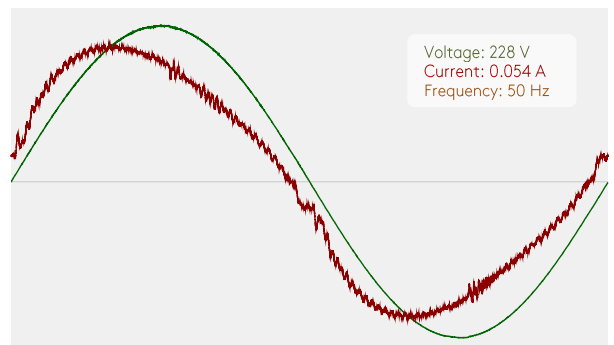


CIE 1931
x: 0.458
y: 0.410

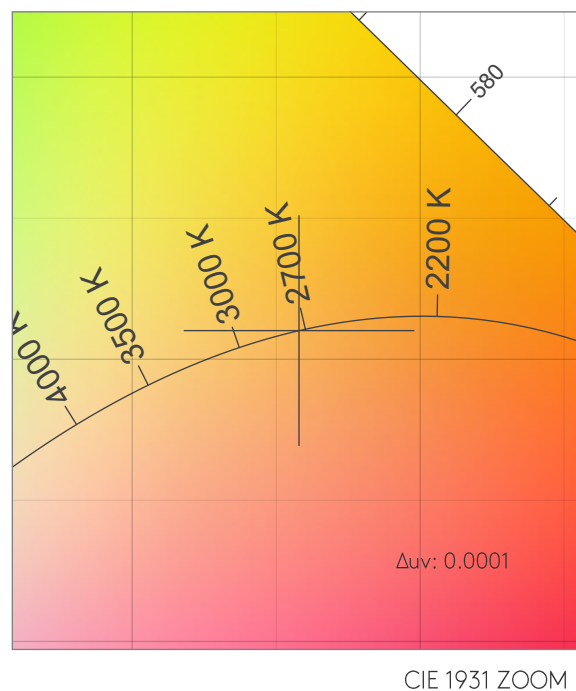
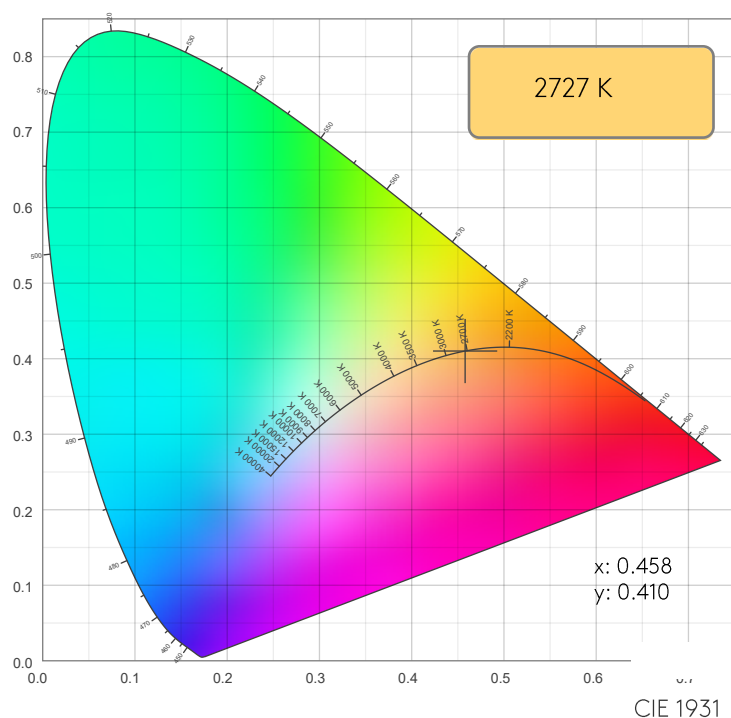
SPECTRA



POWER

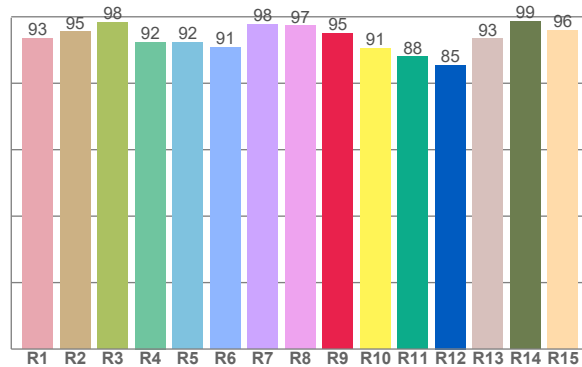
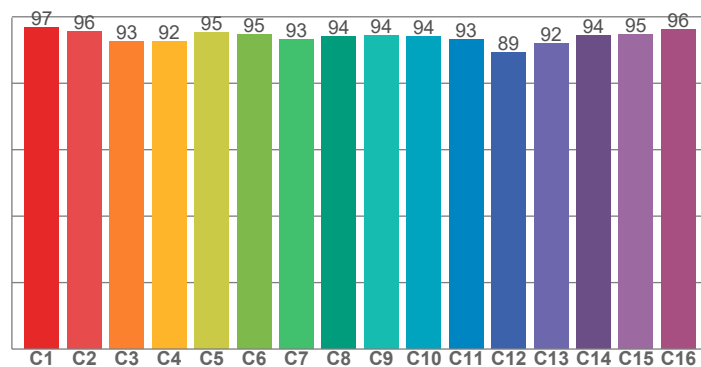


COLOR DETAILS



TM30: 94.1

CRI: 94.7 (R1-R8)



CRI R values, only R1-R8 are used to calculate final CRI value

R1	R2	R3	R4	R5	R6	R7	R8	R9	R10	R11	R12	R13	R14	R15
93.4	95.5	98.3	92.4	92.4	90.8	97.8	97.3	94.9	90.5	87.9	85.5	93.4	98.6	96.0

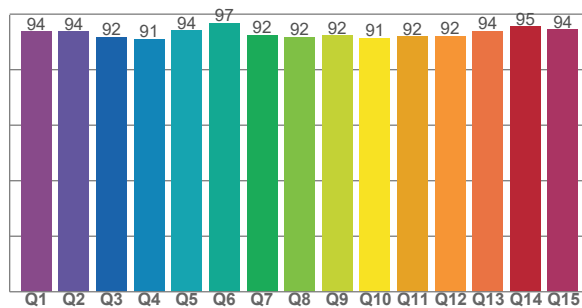
TM30 C values, 16 binned values out of total of 99 C values

C1	C2	C3	C4	C5	C6	C7	C8	C9	C10	C11	C12	C13	C14	C15	C16
96.7	95.7	92.7	92.5	95.3	94.6	93.3	93.9	94.3	94.0	93.2	89.2	91.8	94.4	94.8	96.3

CQS Q values

Q1	Q2	Q3	Q4	Q5	Q6	Q7	Q8	Q9	Q10	Q11	Q12	Q13	Q14	Q15
93.8	93.8	91.8	91.1	94.0	96.8	92.4	91.8	92.3	91.4	92.0	92.1	93.8	95.5	94.4

CQS: 92.9



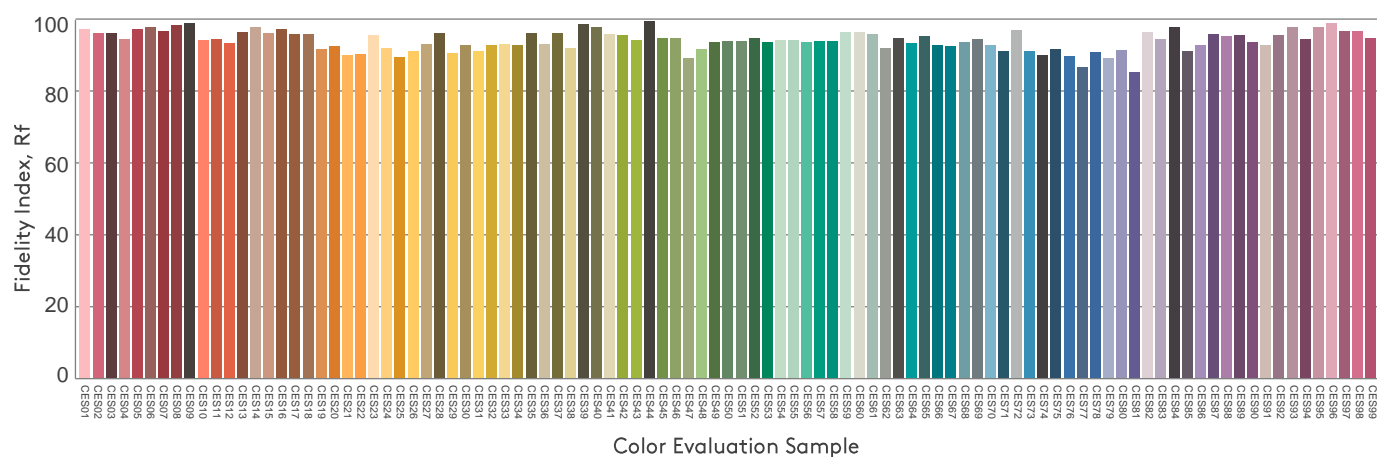
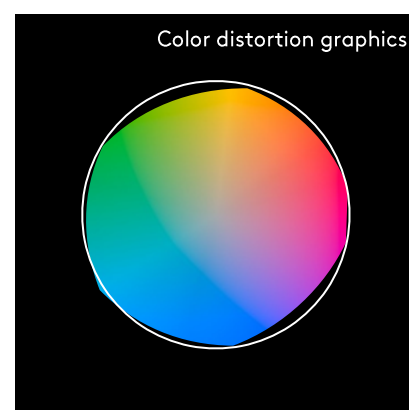
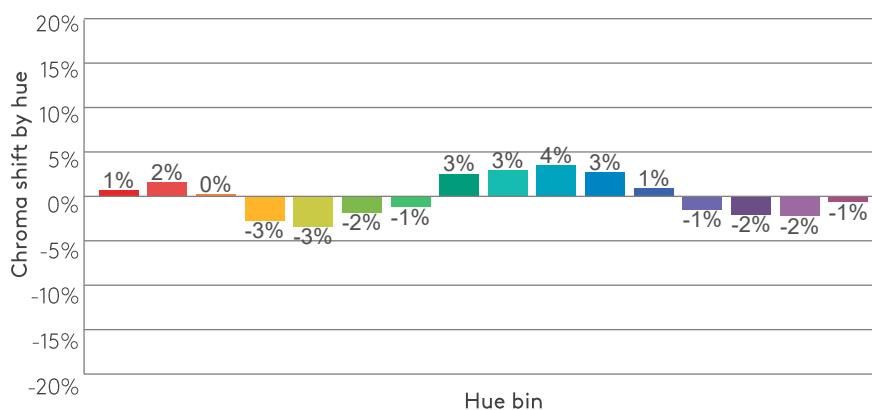
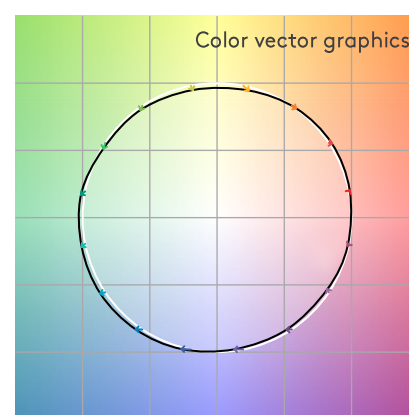
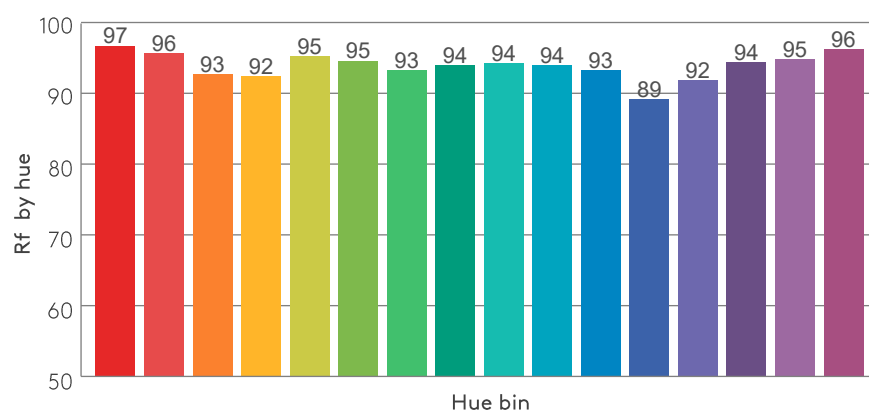
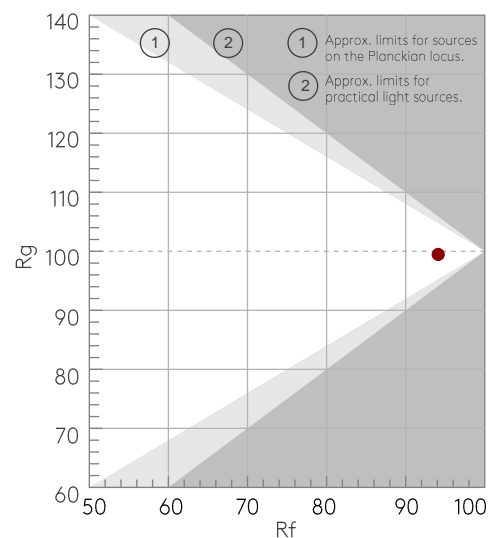
COLOR PARAMETERS

Color temperature	Color rendering index	Red component	Color fidelity	Color gamut	Color quality scale	Color coordinate cie 1931	Color coordinate cie 1931	Color coordinate	Color coordinate	Color deviation from black body
CCT	CRI	CRI R9	TM30 Rf	TM30 Rg	CQS	x	y	u	v	Δuv
2727 K	94.7	94.9	94.1	99.5	92.9	0.458	0.410	0.261	0.351	0.0001

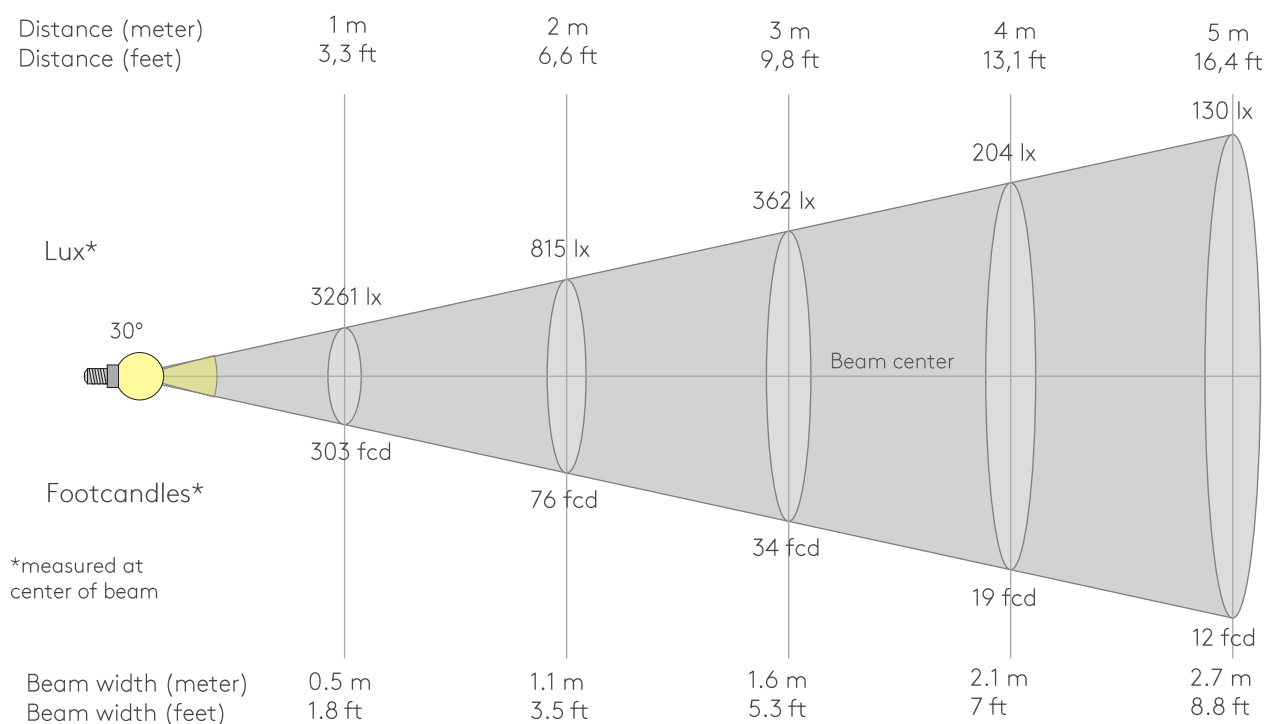
Rf 94.1
Fidelity index Rf

Rg 99.5
Gamut index Rg

Hue Bin	R _f	Graphic shifts (%)	
		Chroma	Hue
1	97	1%	1%
2	96	2%	-2%
3	93	0%	-4%
4	92	-3%	-5%
5	95	-3%	-1%
6	95	-2%	3%
7	93	-1%	4%
8	94	3%	3%
9	94	3%	2%
10	94	4%	-1%
11	93	3%	-4%
12	89	1%	-7%
13	92	-1%	-6%
14	94	-2%	-3%
15	95	-2%	1%
16	96	-1%	-1%



BEAM DETAILS



Beam intensities from 1-20m

1m	2m	3m	4m	5m	6m	7m	8m	9m	10m	11m	12m	13m	14m	15m	16m	17m	18m	19m	20m
3.3ft	6.6ft	9.8ft	13.1ft	16.4ft	19.7ft	23ft	26.2ft	29.5ft	32.8ft	36.1ft	39.4ft	42.7ft	45.9ft	49.2ft	52.5ft	55.8ft	59.1ft	62.3ft	65.6ft
3261lx	815lx	362lx	204lx	130lx	91lx	67lx	51lx	40lx	33lx	27lx	23lx	19lx	17lx	14lx	13lx	11lx	10lx	9lx	8lx
302.9fcd	75.7fcd	33.7fcd	18.9fcd	12.1fcd	8.4fcd	6.2fcd	4.7fcd	3.7fcd	3fcd	2.5fcd	2.1fcd	1.8fcd	1.5fcd	1.3fcd	1.2fcd	1fcd	0.9fcd	0.8fcd	0.8fcd

Intensities in 0° c-plane

0°	2°	4°	6°	8°	10°	12°	14°	16°	18°	20°	22°	24°	26°	28°	30°	32°	34°	36°	38°
3261	3231	3136	2975	2749	2476	2156	1808	1454	1118	818	564	371	232	139	83	50	28	16	11
100%	99%	96%	91%	84%	76%	66%	55%	45%	34%	25%	17%	11%	7%	4%	3%	2%	1%	0%	0%

Intensities in 90° c-plane

0°	2°	4°	6°	8°	10°	12°	14°	16°	18°	20°	22°	24°	26°	28°	30°	32°	34°	36°	38°
3261	3231	3136	2975	2749	2476	2156	1808	1454	1118	818	564	371	232	139	83	50	28	16	11
100%	99%	96%	91%	84%	76%	66%	55%	45%	34%	25%	17%	11%	7%	4%	3%	2%	1%	0%	0%

Intensities in 180° c-plane

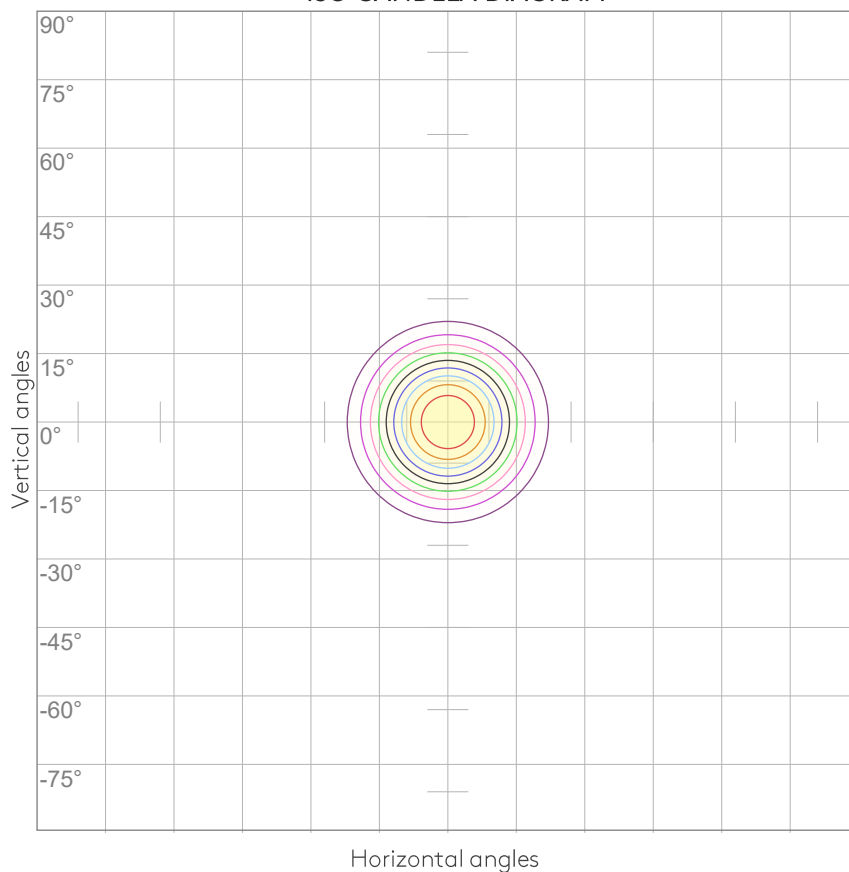
0°	2°	4°	6°	8°	10°	12°	14°	16°	18°	20°	22°	24°	26°	28°	30°	32°	34°	36°	38°
3261	3231	3136	2975	2749	2476	2156	1808	1454	1118	818	564	371	232	139	83	50	28	16	11
100%	99%	96%	91%	84%	76%	66%	55%	45%	34%	25%	17%	11%	7%	4%	3%	2%	1%	0%	0%

Intensities in 270° c-plane

0°	2°	4°	6°	8°	10°	12°	14°	16°	18°	20°	22°	24°	26°	28°	30°	32°	34°	36°	38°
3261	3231	3136	2975	2749	2476	2156	1808	1454	1118	818	564	371	232	139	83	50	28	16	11
100%	99%	96%	91%	84%	76%	66%	55%	45%	34%	25%	17%	11%	7%	4%	3%	2%	1%	0%	0%

Beam angle 50%	Field angle 10%	Cutoff angle 2,5%	Intensity ratio in 120° cone	Intensity ratio in 90° cone
30°	49.1°	60.2°	99.8%	99.5%

ISO CANDELA DIAGRAM



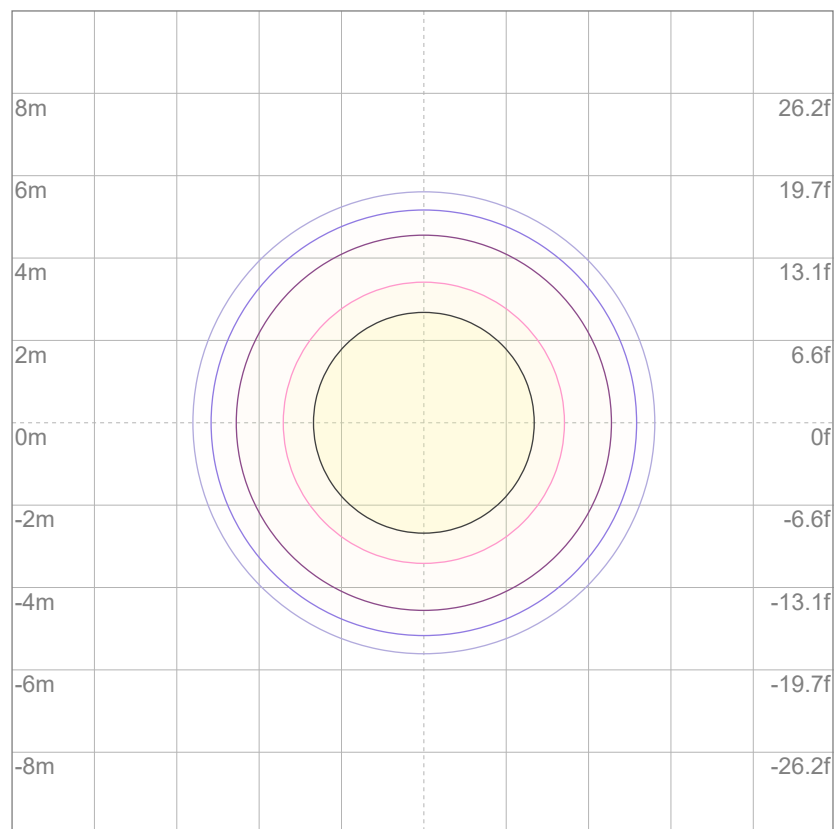
10%	326 cd
20%	652 cd
30%	978 cd
40%	1304 cd
50%	1630 cd
60%	1956 cd
70%	2282 cd
80%	2609 cd
90%	2935 cd

Conditions:

Number of c-planes: 8

Candela at center: 3261 cd

ISO LUX DIAGRAM



Mounting height: 10 meters (33 feet)

3%	0.978 lx
5%	1.63 lx
10%	3.26 lx
30%	9.78 lx
50%	{LUX_10M50} lx

Conditions:

Number of c-planes: 8

Lux at center: 32.6 lx

Lux distribution on a surface
when lamp is mounted at 10
meters from the surface.

UGR

GLARE EVALUATION ACCORDING TO UGR

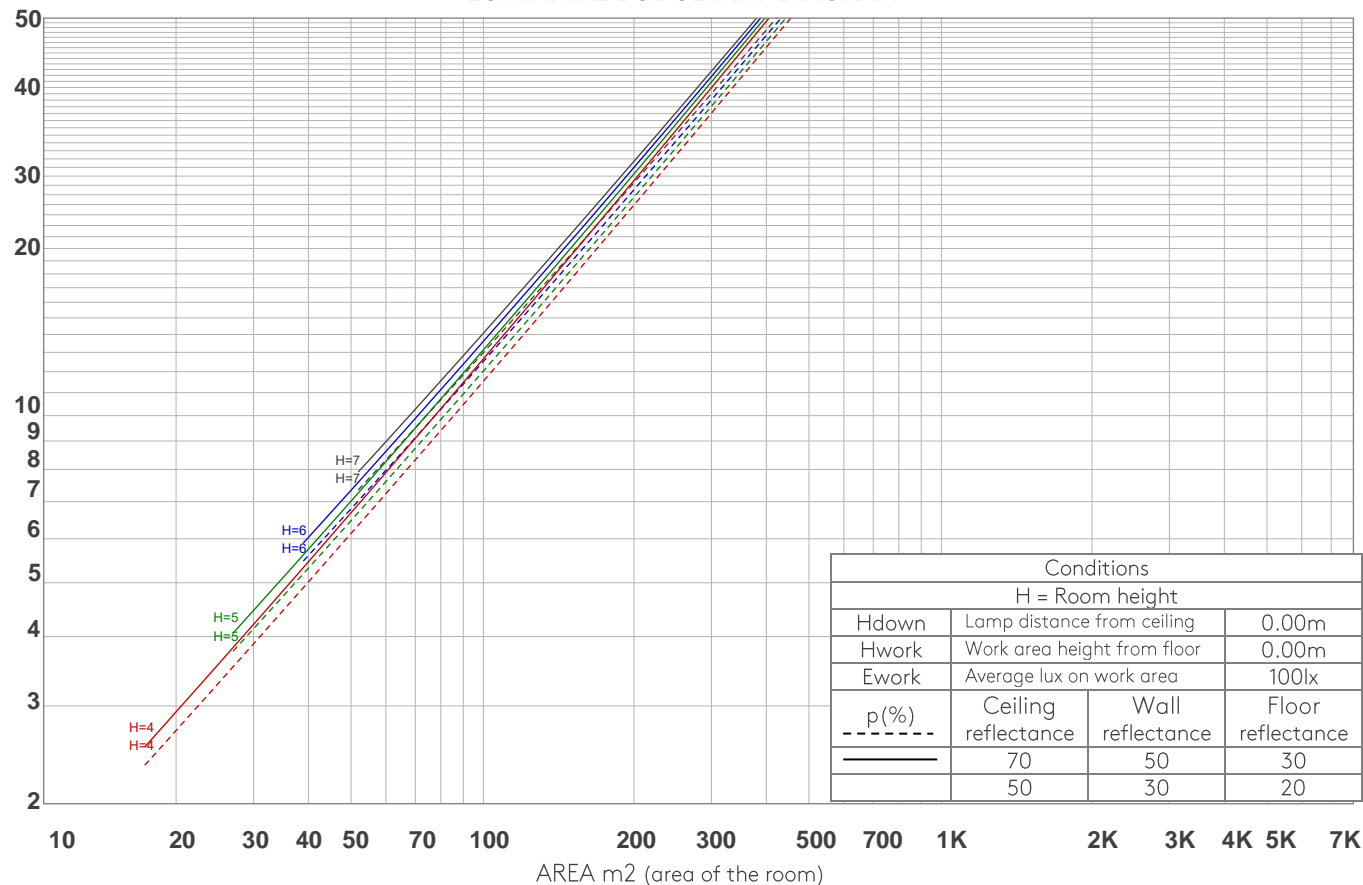
p Ceiling		70	70	50	50	30	70	70	50	50	30
p Walls		50	30	50	30	30	50	30	50	30	30
p Floor		20	20	20	20	20	20	20	20	20	20
Room size X Y		Viewing direction at right angles to lamp axis					Viewing direction parallel to lamp axis				
2H	2H	6.9	7.3	6.9	7.5	7.6	6.9	7.3	6.9	7.5	7.6
	3H	6.6	7.1	6.9	7.3	7.5	6.6	7.1	6.9	7.3	7.5
	4H	6.5	7.0	6.9	7.2	7.5	6.5	7.0	6.9	7.2	7.5
	6H	6.5	6.9	6.8	7.2	7.6	6.5	6.9	6.8	7.2	7.6
	8H	6.4	6.9	6.7	7.2	7.6	6.4	6.9	6.7	7.2	7.6
	12H	6.4	6.8	6.7	7.1	7.6	6.4	6.8	6.7	7.1	7.6
4H	2H	6.5	7.0	6.9	7.3	7.5	6.5	7.0	6.9	7.3	7.5
	3H	6.4	6.8	6.7	7.1	7.6	6.4	6.8	6.7	7.1	7.6
	4H	6.2	6.6	6.6	7.0	7.6	6.2	6.6	6.6	7.0	7.6
	6H	6.1	6.6	6.6	6.9	7.3	6.1	6.6	6.6	6.9	7.3
	8H	6.1	6.5	6.6	6.8	7.2	6.1	6.5	6.6	6.8	7.2
	12H	6.0	6.3	6.5	6.7	7.2	6.0	6.3	6.5	6.7	7.2
8H	4H	6.1	6.5	6.6	6.8	7.2	6.1	6.5	6.6	6.8	7.2
	6H	6.0	6.3	6.5	6.7	7.3	6.0	6.3	6.5	6.7	7.3
	8H	6.0	6.2	6.5	6.7	7.4	6.0	6.2	6.5	6.7	7.4
	12H	6.0	6.1	6.6	6.6	7.2	6.0	6.1	6.6	6.6	7.2
12H	4H	6.0	6.3	6.5	6.7	7.2	6.0	6.3	6.5	6.7	7.2
	6H	6.0	6.2	6.5	6.7	7.3	6.0	6.2	6.5	6.7	7.3
	8H	5.9	6.1	6.5	6.6	7.2	5.9	6.1	6.5	6.6	7.2
Variation of the observer position for the luminaire distance S											
S = 1.0H		6.3 / -10.5					6.3 / -10.5				
S = 1.5H		9.0 / -13.7					9.0 / -13.7				
S = 2.0H		11.0 / -14.6					11.0 / -14.6				
Standard table		n/a					n/a				
Correction summand		n/a					n/a				
Corrected glare indices referring to 885 lm total luminous flux											

COEFFICIENTS OF UTILIZATION

Ceiling reflectance	80				70				50			30			10			0
Wall reflectance	70	50	30	10	70	50	30	10	50	30	10	50	30	10	50	30	10	0
Floor reflectance	20	20	20	20	20	20	20	20	20	20	20	20	20	20	20	20	20	0
RCR	(RCR: Room Cavity Ratio) Room Values are expressed as percentage of Lumens delivered to the task surface																	
0	119	119	119	119	116	116	116	116	111	111	111	106	106	106	102	102	102	100
1	115	113	111	109	113	111	109	107	107	105	104	103	102	101	100	99	98	96
2	111	108	105	102	109	106	103	101	103	101	99	100	98	97	97	96	95	93
3	108	103	99	96	106	102	98	96	99	96	94	97	95	93	95	93	91	90
4	104	99	95	92	103	98	94	91	96	93	90	94	91	89	92	90	88	87
5	101	95	91	88	100	94	91	88	93	89	87	91	88	86	90	87	85	84
6	98	92	88	85	97	91	87	84	90	86	84	89	86	83	87	85	83	82
7	95	89	85	82	94	88	84	81	87	84	81	86	83	81	85	82	80	79
8	93	86	82	79	92	86	82	79	85	81	79	84	81	78	83	80	78	77
9	90	83	79	77	89	83	79	76	82	79	76	81	78	76	81	78	76	75
10	88	81	77	74	87	81	77	74	80	76	74	79	76	74	79	76	74	73

LAMPS (number of lamps)

LUMINAIRE BUDGETARY DIAGRAM



ZONAL LUMEN SUMMARY

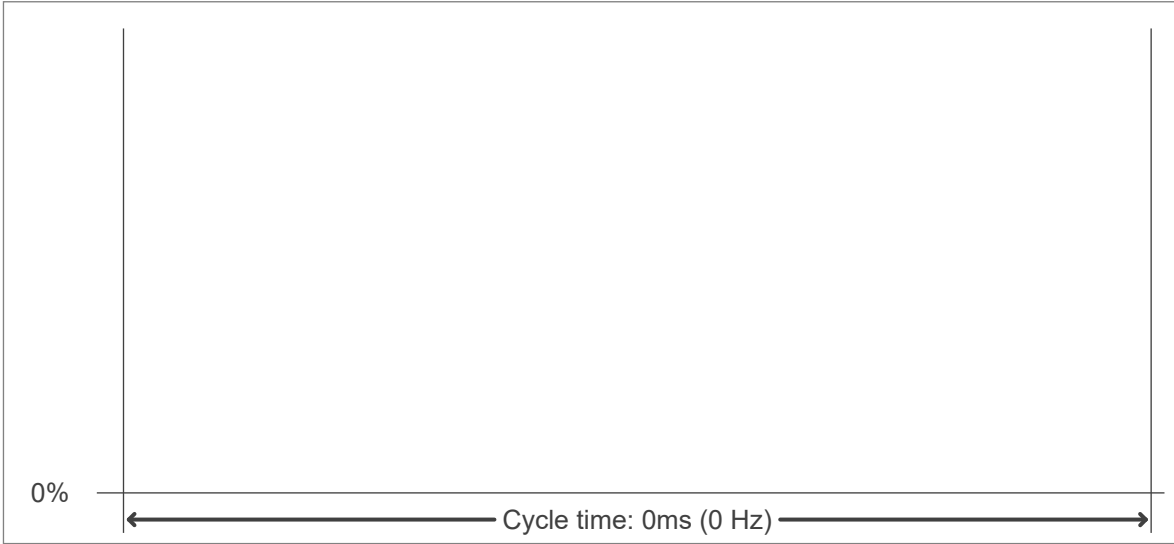
0°-10°	10°-20°	20°-30°	30°-40°	40°-50°	50°-60°	60°-70°	70°-80°	80°-90°
274 lm	438 lm	150 lm	17.6 lm	3.18 lm	0.944 lm	0.155 lm	0.060 lm	0.058 lm
90°-100°	100°-110°	110°-120°	120°-130°	130°-140°	140°-150°	150°-160°	160°-170°	170°-180°
0.054 lm	0.059 lm	0.069 lm	0.079 lm	0.154 lm	0.344 lm	0.476 lm	0.352 lm	0.081 lm

FLICKER

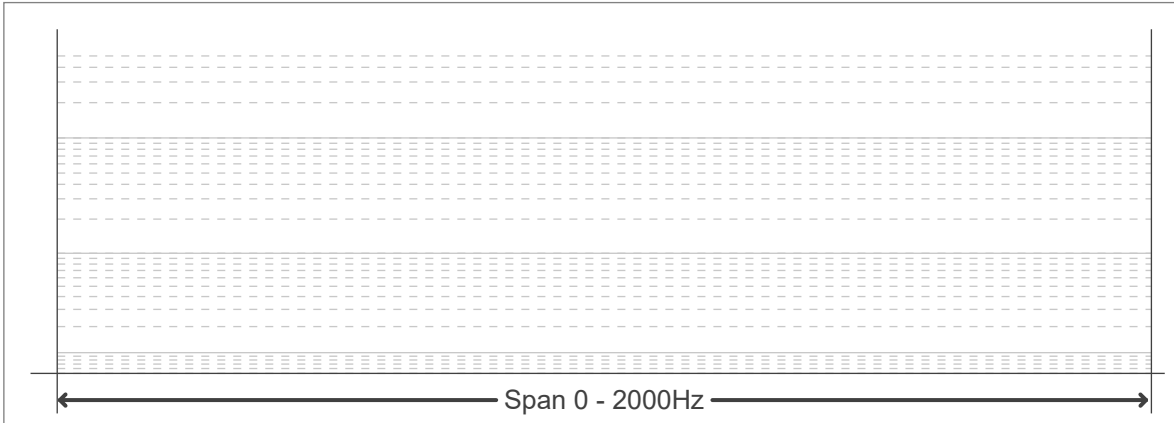
FLICKER CURVE (COMPLETE SAMPLED)



FLICKER FRAME (FRAME OF ONE FLICKER)



FLICKER FFT (FREQUENCY SCOPE OF FLICKER)



FLICKER RESULTS:

Flicker frequency:	n/a Hz
Flicker index:	n/a
Flicker percentage:	n/a %
SVM: (Visual flicker)	n/a

FLICKER CONDITIONS:

Sample rate:	n/a samples/second
--------------	--------------------